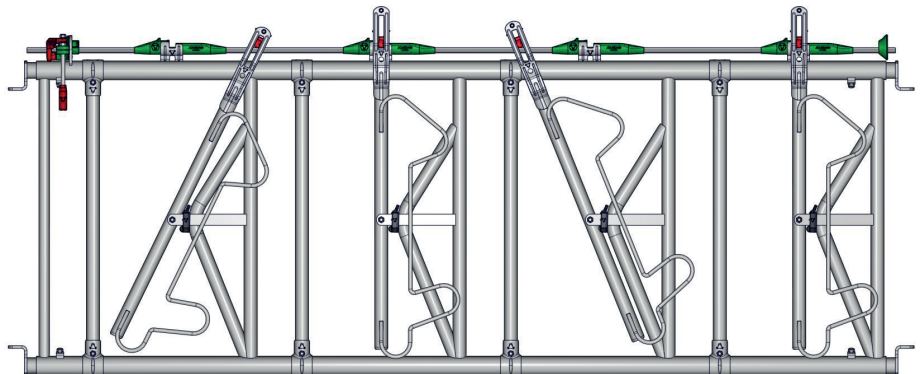
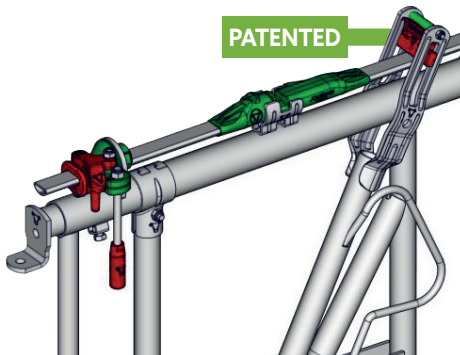


SAFETY® IV HEADLOCK (ref. SQ)

Terms and conditions of use

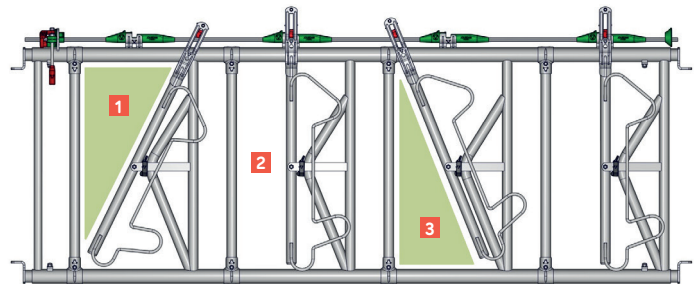


SQ0430
SAFETY® IV headlock
4 spaces/3 m

DESCRIPTION

The SAFETY® headlock is symmetrical, with mobile arm centred in the middle, providing as much space at the entrance **1** as safety clearance at the bottom **3**

The animals enter and leave from the top part **1**
The bottom part facilitates the animal's exit, with the help of the farmer **3**
The lock is in position **2**



Suitable for dehorned dairy cattle. For animals from 12 months to adulthood (depending on model). Not suitable for beef cattle.

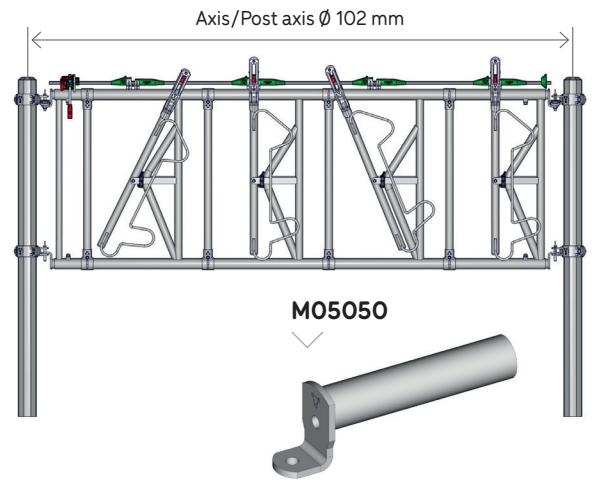
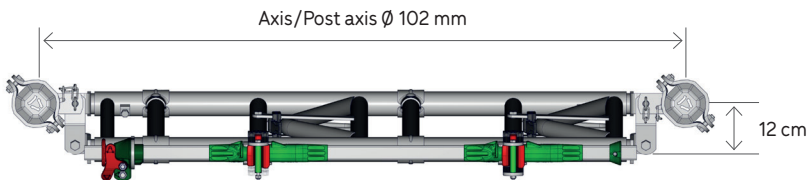
Holds animals at the trough to limit food competition. Facilitates animal sorting. Allows farmers to provide routine care.



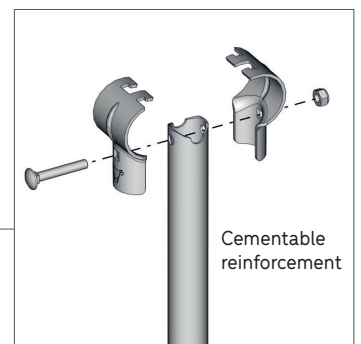
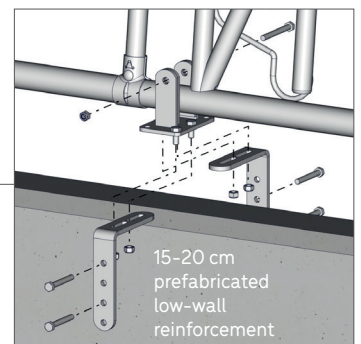
INSTALLATION

Opt for a tilted assembly, of a maximum of 12 cm, for greater comfort and optimised access to feed.

Nominal lengths correspond to the specific dimensions of the JOURDAIN 102 mm-diameter axis/post axis with standard ends **ref. MO5050** supplied as standard.



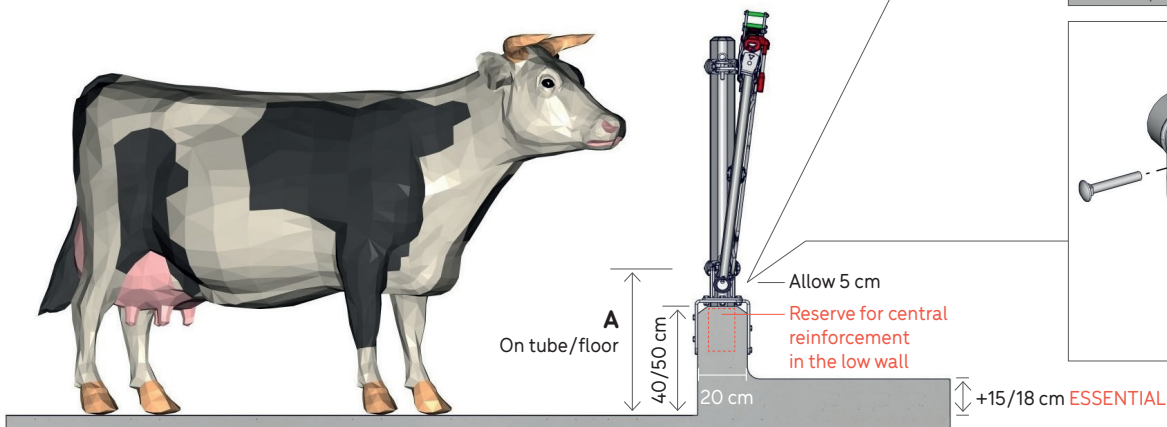
MO0260



1 Central reinforcement and installation height

Indicative dimensions
for average-sized
adult cows

	A
Adult cow	55/65 cm
Heifer	45/55 cm



CAUTION

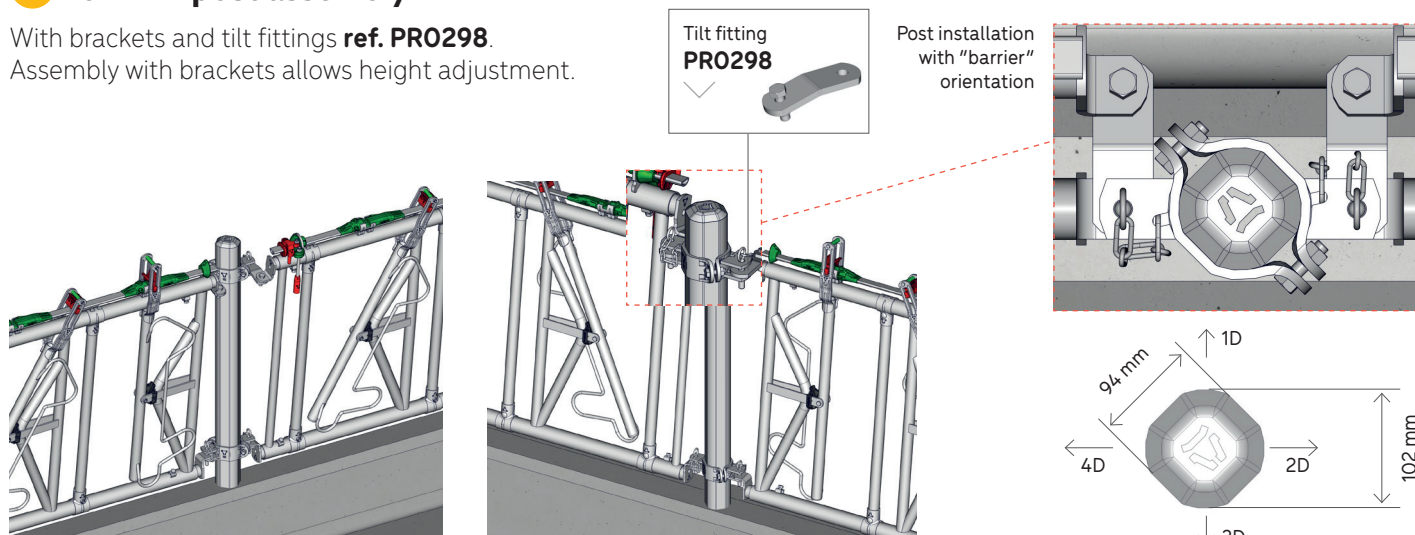
For a headlock panel 4 m in length or longer, cementable reinforcement is supplied. It must be cemented to the low-wall axis, or a screw-fitted version for prefabricated low walls is available to order **ref. MO0260**.

For a headlock panel 6 m in length, two reinforcements are recommended.

To limit corrosion, the headlock should not be in contact with the low wall.

2 102 mm post assembly

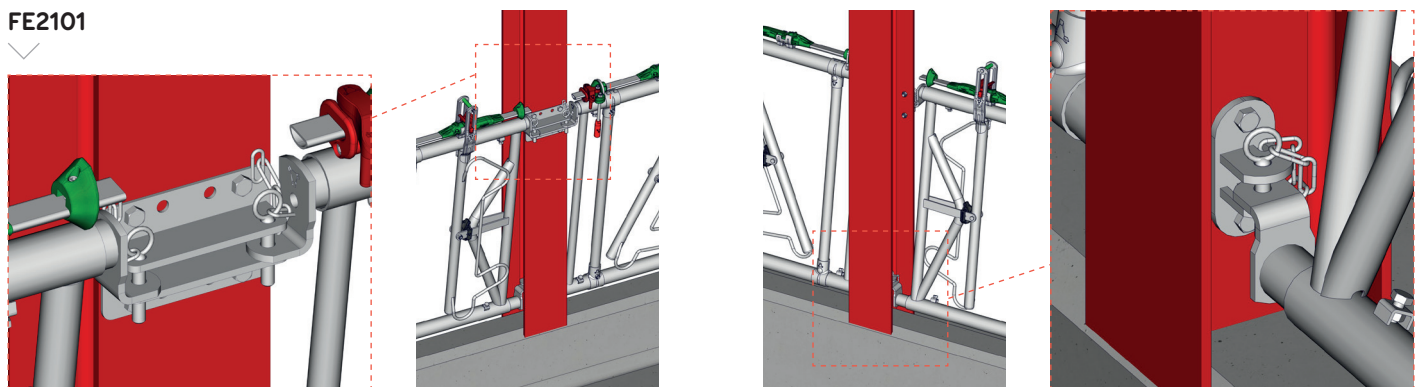
With brackets and tilt fittings **ref. PR0298**.
Assembly with brackets allows height adjustment.



3 Structural-post assembly

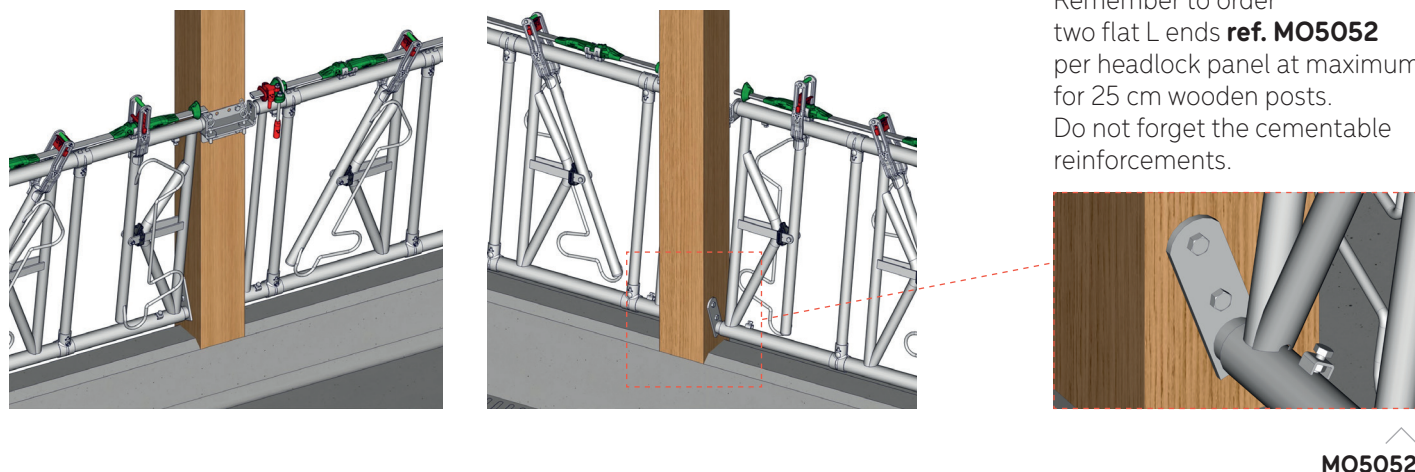
With single bracket **ref. FE2102** and double bracket **ref. FE2101**.

FE2101



4 Wooden-post assembly

With double bracket **ref. FE2101** and flat L end **ref. MO5052**.

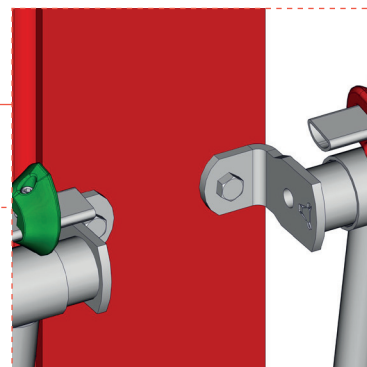
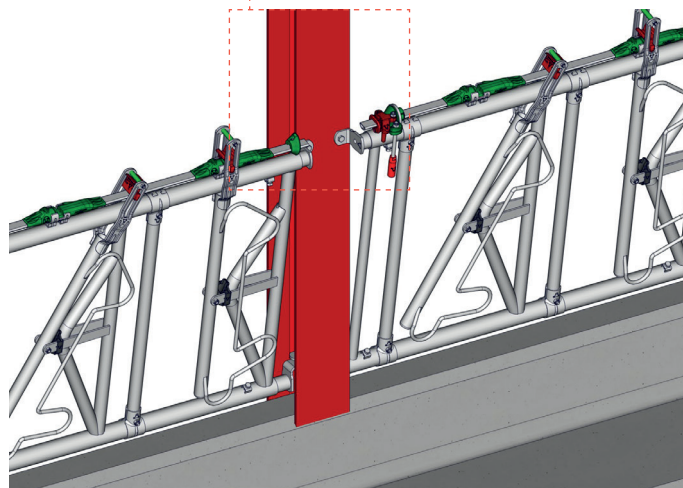
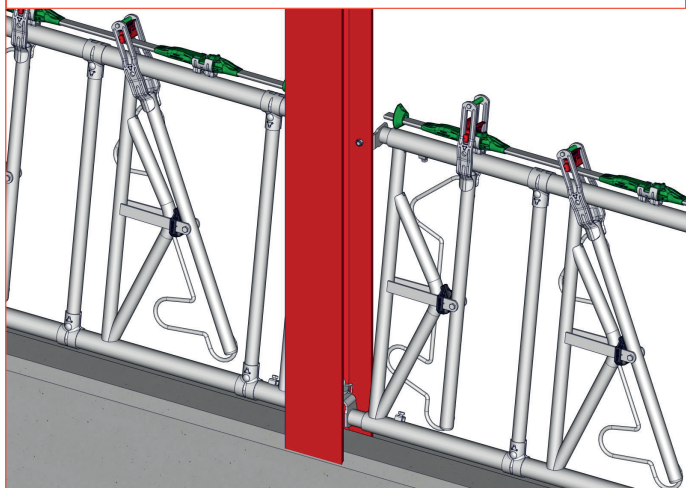


ASSEMBLY TO BE AVOIDED

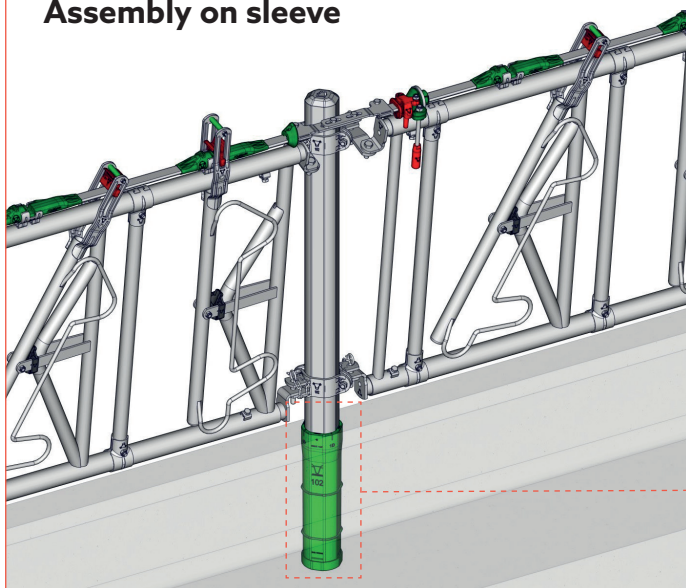
Assembly on structural post

CAUTION

On building posts with ends directly bolted to the rigid post, this leaves no flexibility when pushed by animals.
Risk of end breakage and headlock falling.



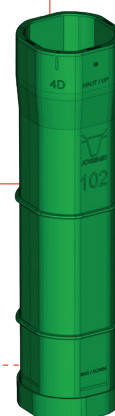
Assembly on sleeve



CAUTION

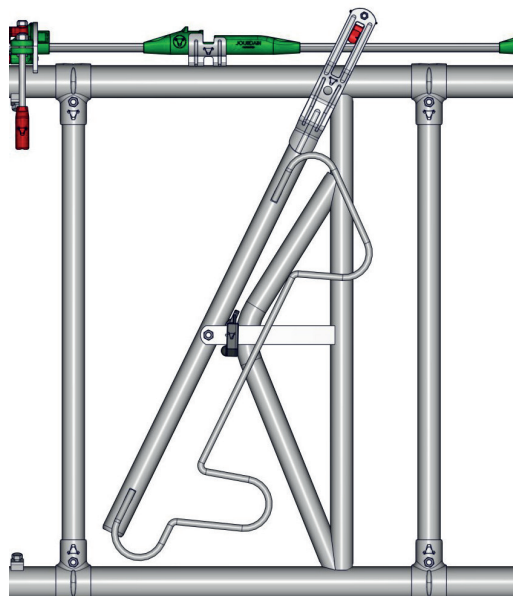
The installation of a disassembly sleeve **ref. TR4100** is not recommended at headlocks, bearing in mind the force of animals pushing at the trough.

TR4100



5 Orientation

Place the non-pass-through bracket on the feed-corridor side.

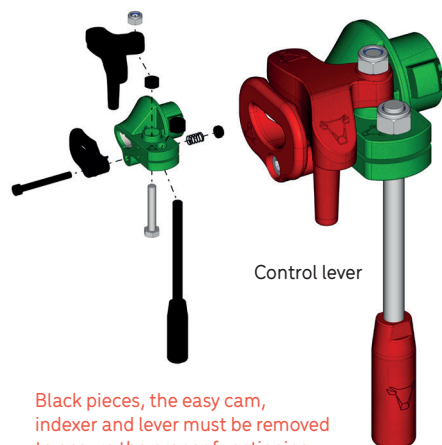
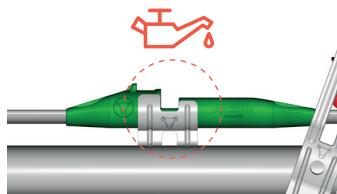


6 Control lever and linkage attachment for tilted headlock

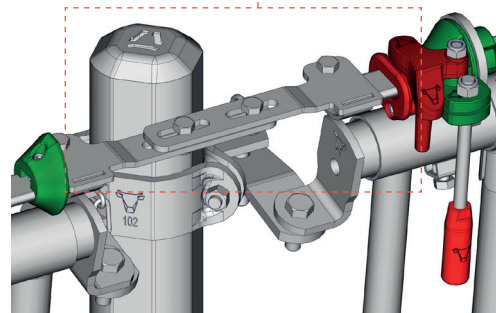
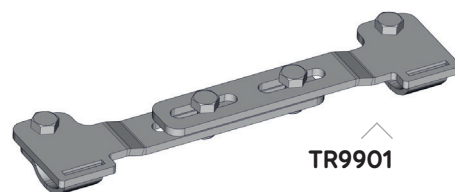


The control lever makes it possible to manoeuvre a maximum of 5 panels and may be positioned in the middle. Use the linkage attachment option **ref. TR9901**. Remember to move indexes from slave-panel levers.

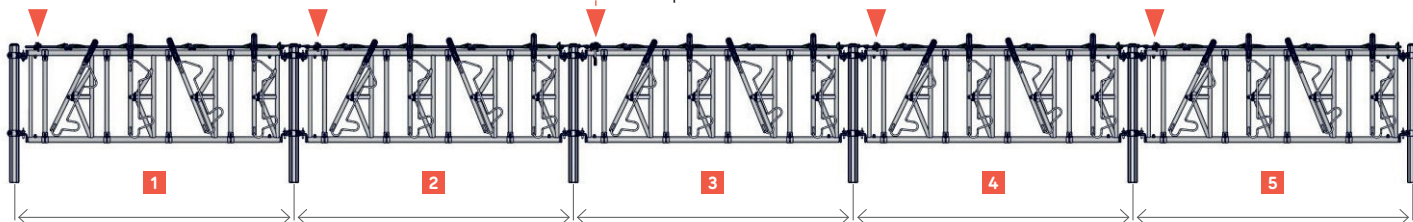
To ensure proper functioning, the headlocks must be perfectly aligned and rotation bearings lubricated.



Black pieces, the easy cam, indexer and lever must be removed to ensure the proper functioning of attached panels in rotation.



Lever position



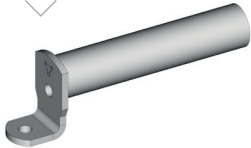
HEADLOCK END

Different types of ends are available according to the posts used. The tilt fitting **ref. PR0298**, allows the headlock to be tilted to attach control linkages and makes it easier and less tiring when animals push on the top of the headlock.

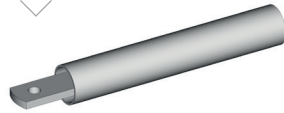
CAUTION

Caution, adjustable ends must not be stretched by more than 10 cm to the left and 6.5 cm to the right on the lever side.

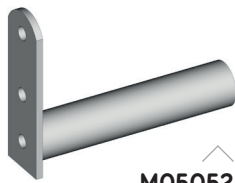
M05050



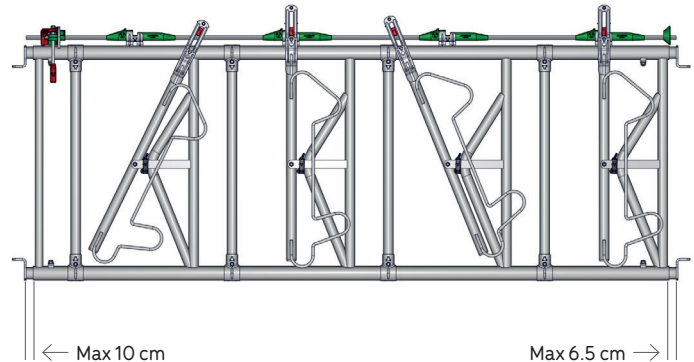
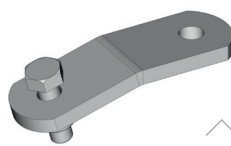
M05054



M05052



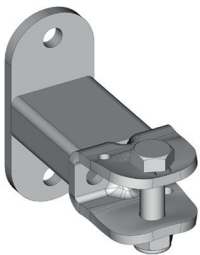
PR0298



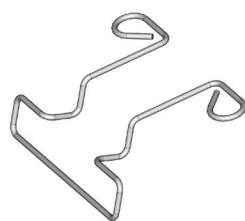
1 Headlock mounting bracket models

Different types of brackets and flanges are available according to the posts. The multifix **ref. FE2017** and **FE2015** are intended for RSJ-type building post assemblies. On wooden posts, do not use the **FE2017** multifix. We recommend using the wire cage **ref. FE2095** to prevent animals from playing with the pins.

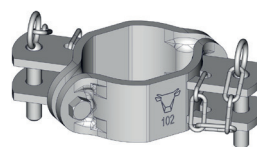
FE2014



FE2095



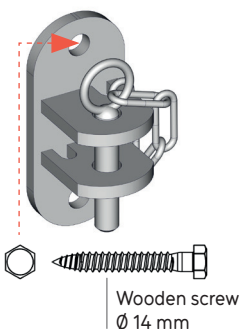
TR4002



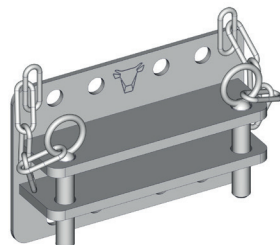
CAUTION

Take care to properly check the maintenance of chains over time.

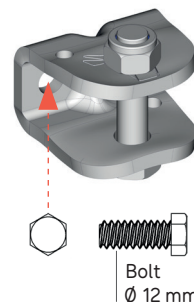
FE2002



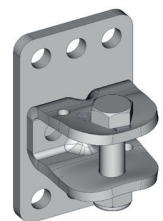
FE2101



FE2017



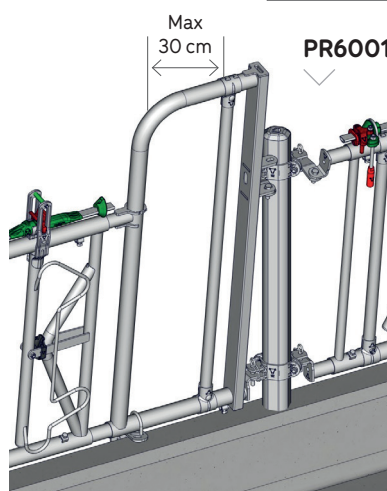
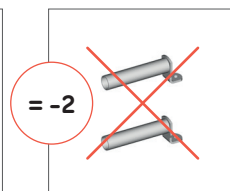
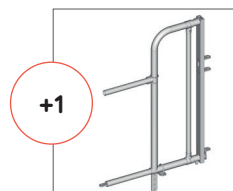
FE2015



2 Entry-gate installation

The entry-gate end **ref. PR6001** is installed instead of two headlock ends. It offers a 30 cm passage and allows one dairy cow to eat. By lifting the vertical bar and adding an opening small gate **ref. BA2088**, it is possible to allow a 40 cm passage, although the space to feed a dairy cow will be lost.

Provide evenly distributed entry gates to simplify the work of farmers. This option, fitted at the end of a 5 space/3.40 m, 6 space/4.40 m or 8 space/5.40 m headlock makes it possible to cover a post spacing of 4, 5 or 6 m.



CAUTION

The low-wall dairy reinforcement provided must be installed with the passage, as well as the headlock reinforcement.

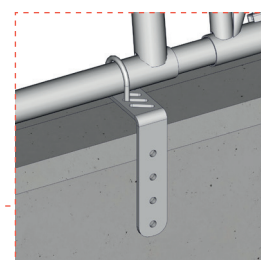


PR6001



PR6001
+ BA2088

TR9903

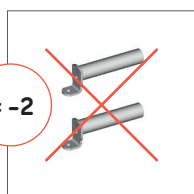
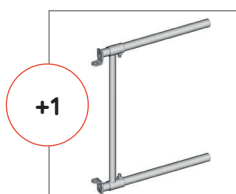


3 Extended headlock end installation

The extended headlock end **ref. PR5052** is installed in the place of two headlock ends. This makes it possible to extend a 40 cm headlock panel.

CAUTION

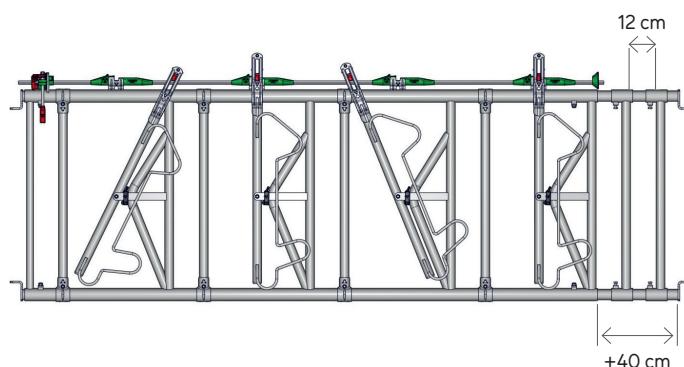
Add an additional bar **ref. PR5053** to avoid creating a dangerous area. A space of more than 12 cm creates a hanging risk for calves.



PR5052



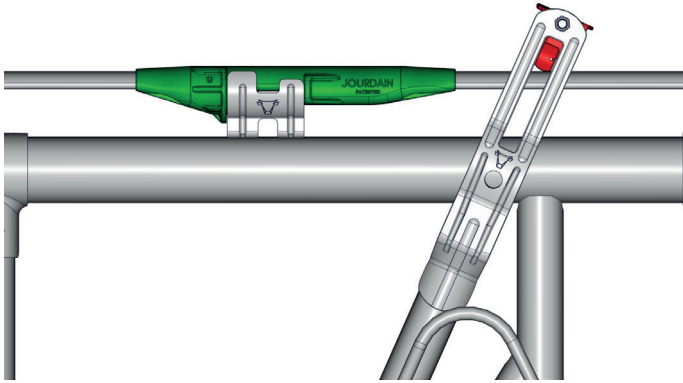
PR5053



USE

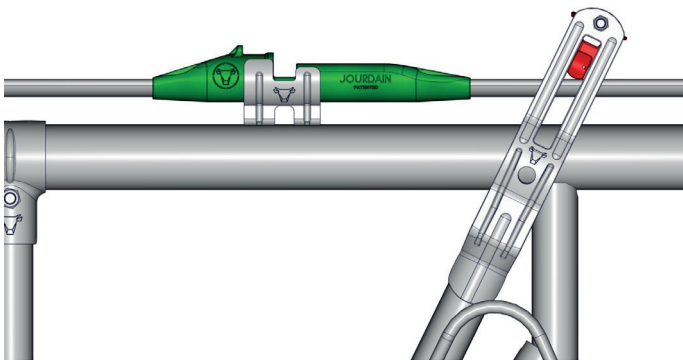
1 Self-service position

The linkage has a self-service position allowing the animal to enter and leave as it wishes.



2 Lock position

The linkage can be placed in the lock position by unlocking it with one hand and turning it one half turn, enabling all animals to be held at the headlock. Once they are used to it, the headlock becomes a contention tool making it easy to calmly trap animals.

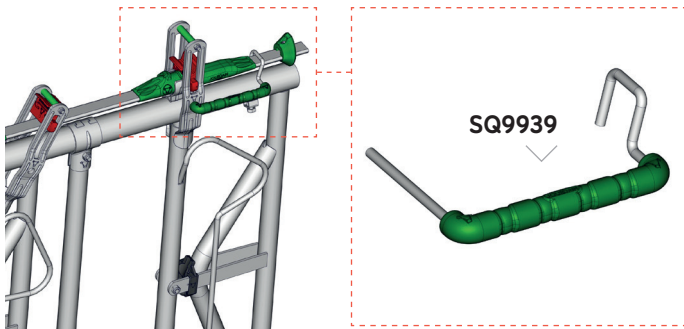


CAUTION

Always take care when approaching animals at the headlock.

3 Holding an animal at the headlock individually

Install the individual locking pin **ref. SQ9939**, then turn the linkage to the lock position. The ergonomic metal piece makes it possible to safely lock the animal in before any treatment.

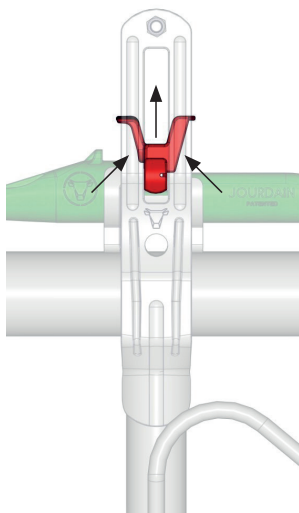


4 Unlocking

A restrained animal can be unlocked by lifting the red pin using the two wings, while remaining cautious with regard to any sudden animals from the animal or the mobile arm.

CAUTION

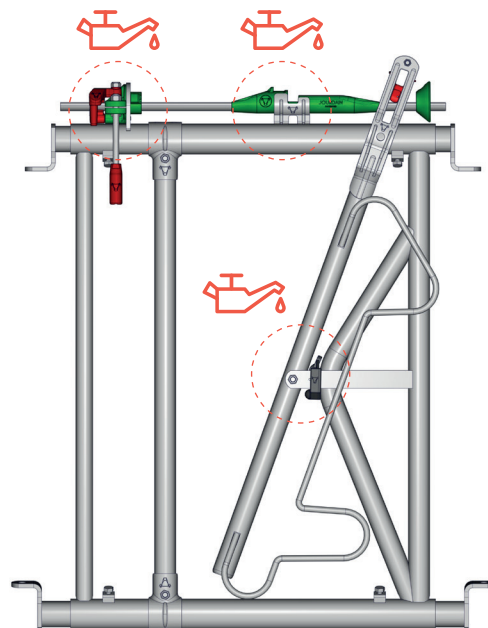
Do not place your hand on the headlock when unlocking. Ensure that all animal well-being regulations are respected.



MAINTENANCE



Regularly lubricate moving parts:
hinge pins of mobile arms,
the control lever and any other
necessary parts.
Check screw tightness.



SAFETY

The installation and height of the headlock can be adapted according to the installation and livestock **E**. The neck contention (the dimensions of the animal's neck) can be adjusted by the farmer according to the animals, their age and their morphology. For a dairy cow, we recommend a setting of between 19 and 22 cm.



The headlock's fittings should also be checked, ensuring that the chains remain in position. If the animals lift these, remember to replace them and, optionally, install the wire cage **ref. FE2095** to avoid opening by animals.



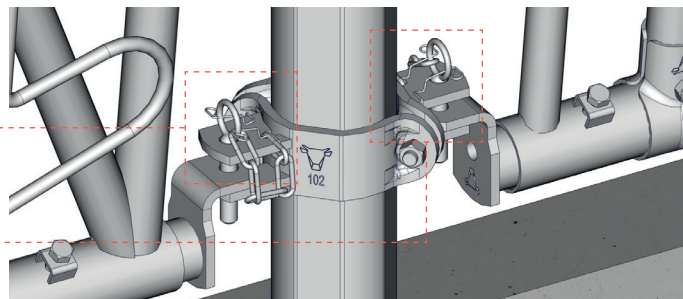
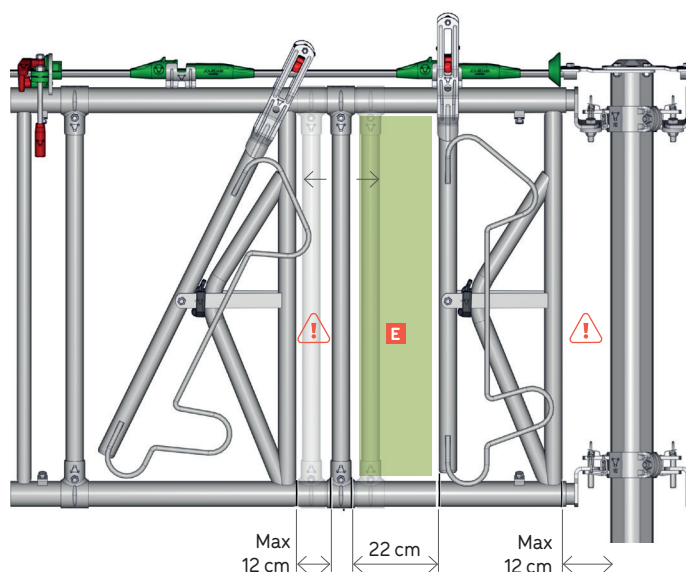
E



FE2095

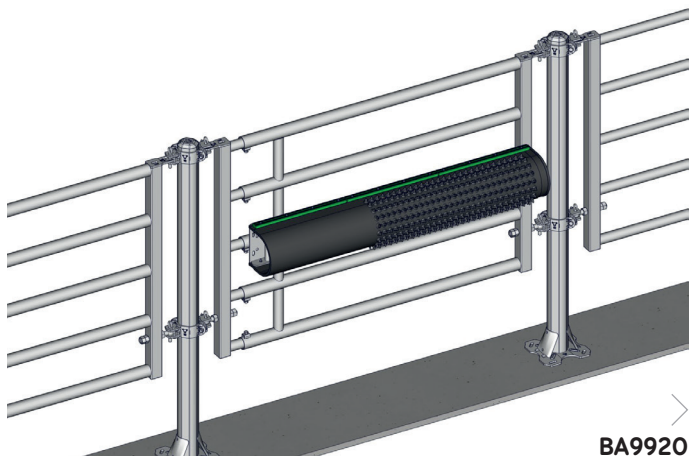
CAUTION

For safety, leave a maximum of 12 cm for a calf.



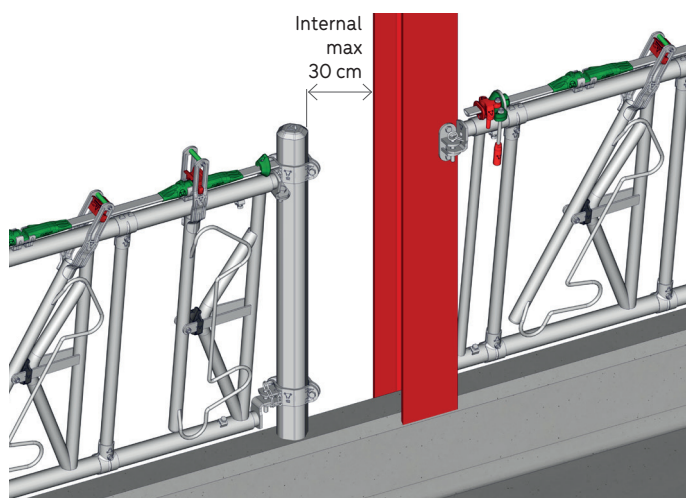
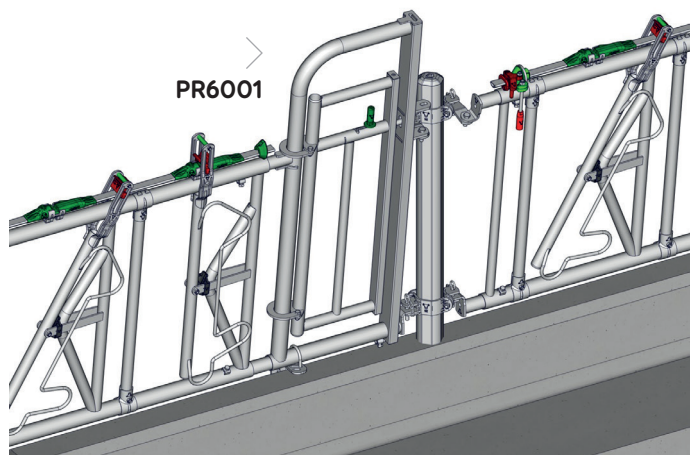
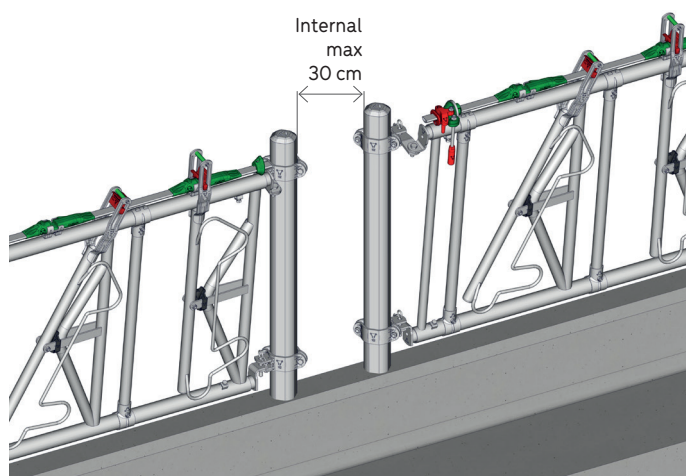
Grat'O Gratte

The regular installation of Grat'O Gratte brushes is a source of comfort for animals and discourages them from scratching on equipment and causing damage or injury.



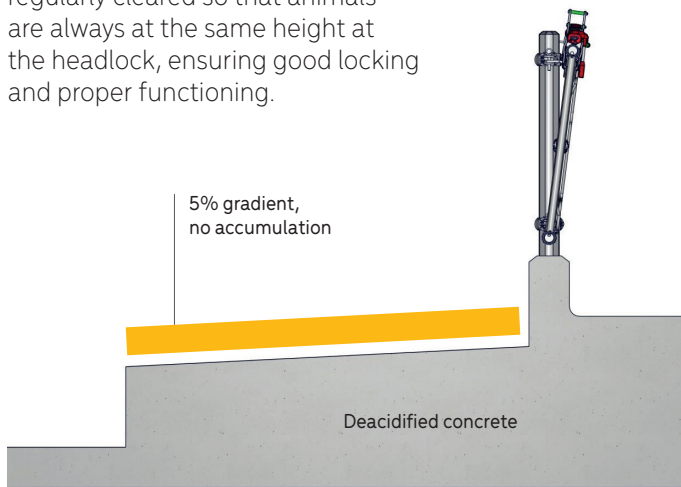
Headlock entry gate

The installation of an entry gate in the headlock, or a passage between two distant posts, is recommended wherever possible to ensure an emergency escape route for the farmer, with quick opening and closure. We recommend installing an entry gate every 6 panels.





The step on the animals' side, if subject to accumulation, must be regularly cleared so that animals are always at the same height at the headlock, ensuring good locking and proper functioning.



When the farmer is not present in the building, and especially at night, leave the headlock in the self-service position.



CAUTION

Animals with collars are a source of potential accidents in the equipment. Check collar tightness as the animal's morphology develops. Use a collar with a safety device.

Despite the great care we take in the design of our products, always striving for optimal animal well-being and maximum safety levels. JOURDAIN cannot be held liable in the event of any accidents involving animals.

Knowledge and everyday surveillance of livestock by the farmer remain the safest ways to prevent accidents.

CORROSION

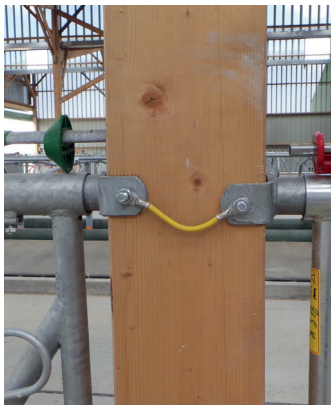
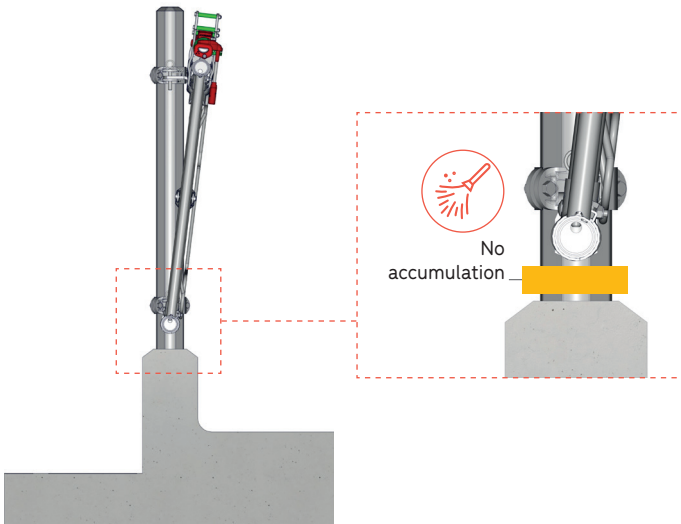
Remember to earth your equipment for safety and to limit corrosion. You may install a heat-shrinkable sleeve **ref. TR0101** or powder-coated post to limit corrosion.

The accumulation of silage on the headlock wall can cause corrosion of the lower longeron.

CAUTION



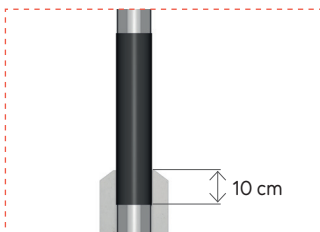
Corrosion in livestock-farming buildings is frequently caused by aggressive agents and the environment. Remember to brush and paint with a bituminous paint at the first sign of corrosion.



TR0101



TR0121



Adapt the height of the sock to the contact area, 10 cm under the concrete, and leave the metal post cemented in direct contact with the concrete.

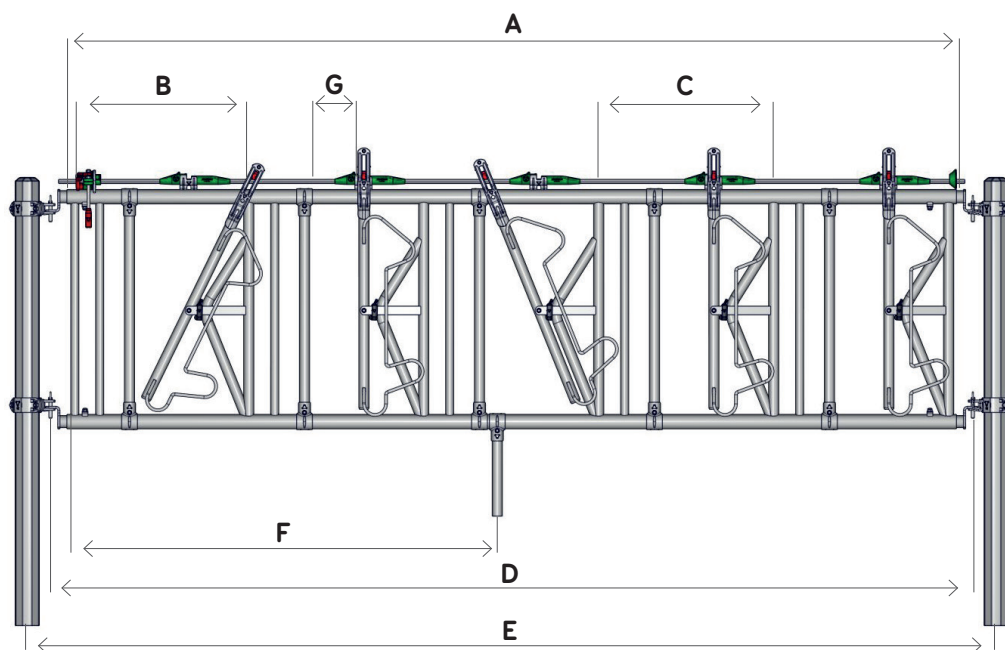


TECHNICAL LITERATURE

NOTE: Dimensions are given in millimetres (mm).

A	Longeron length
B	Starting space dimensions
C	Space-per-cow dimensions
D	Fixing spacing
E	Post spacing
F	Cementable reinforcement position
G	Max neck restraint

Adjustable SAFETY® IV
(assembly on Ø 102 mm
OCTAGONAL post, bracket
and standard ends
ref. MO5050)



Ref.	Name (space/m)	A	B	C	D (min)	E (min)	D (max)	E (max)	F	G
SQ0110	1 s./1 m	720	660	-	808	1,004	970	1,166	-	235
SQ0216	2 s./1.60 m	1,310	621	628	1,398	1,594	1,560	1,756	-	280
SQ0320	3 s./2 m	1,700	583	530	1,788	1,984	1,950	2,146	-	230
SQ0430	4 s./3 m	2,700	656	664	2,788	2,984	2,950	3,146	-	315
SQ0534	5 s./3.40 m	3,100	595	610	3,188	3,384	3,350	3,546	-	265
SQ0540	5 s./4 m	3,700	724	728	3,788	3,984	3,950	4,146	1,790	275
SQ0640	6 s./4 m	3,700	593	610	3,788	3,984	3,950	4,146	1,760	265
SQ0644	6 s./4.40 m	4,100	656	675	4,188	4,384	4,350	4,546	2,100	330
SQ0740	7 s./4 m	3,700	581	510	3,788	3,984	3,950	4,146	2,060	210
SQ0650	6 s./5 m	4,700	774	774	4,788	4,984	4,950	5,146	2,260	325
SQ0750	7 s./5 m	4,700	660	664	4,788	4,984	4,950	5,146	1,930	315
SQ0850	8 s./5 m	4,700	577	581	4,788	4,984	4,950	5,146	2,260	235
SQ0854	8 s./5.40 m	5,080	621	628	5,168	5,365	5,330	5,526	2,450	280
SQ0950	9 s./5 m	4,700	561	510	4,788	4,984	4,950	5,146	2,550	210
SQ0860	8 s./6 m	5,700	708	705	5,788	5,984	5,950	6,146	2,770	255
SQ0960	9 s./6 m	5,700	619	628	5,788	5,984	5,950	6,146	3,070	280
SQ1060	10 s./6 m	5,700	580	562	5,788	5,984	5,950	6,146	2,730	215
SQ1160	11 s./6 m	5,700	541	510	5,788	5,984	5,950	6,146	2,530	210

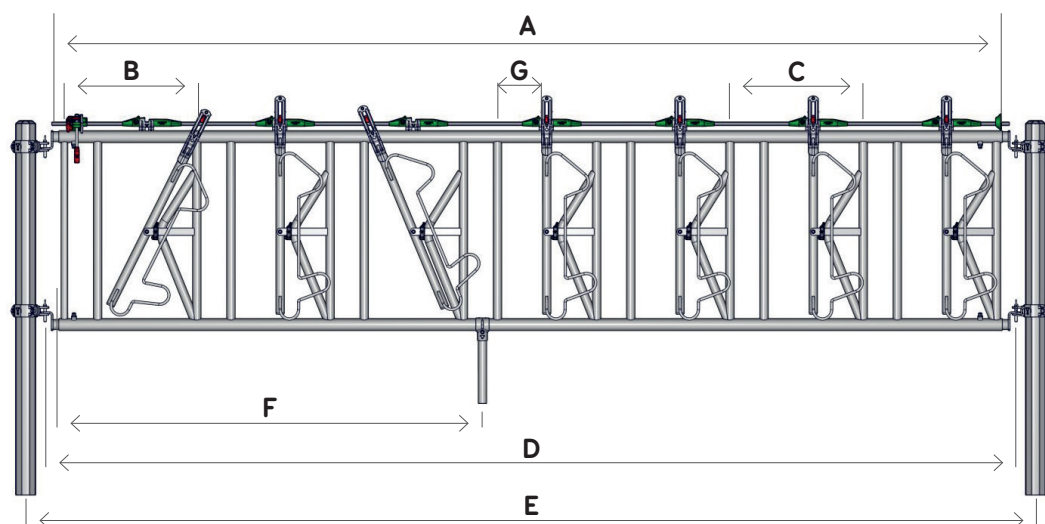


JOURDAIN
N°1 MONDIAL DU TUBULAIRE BOVIN



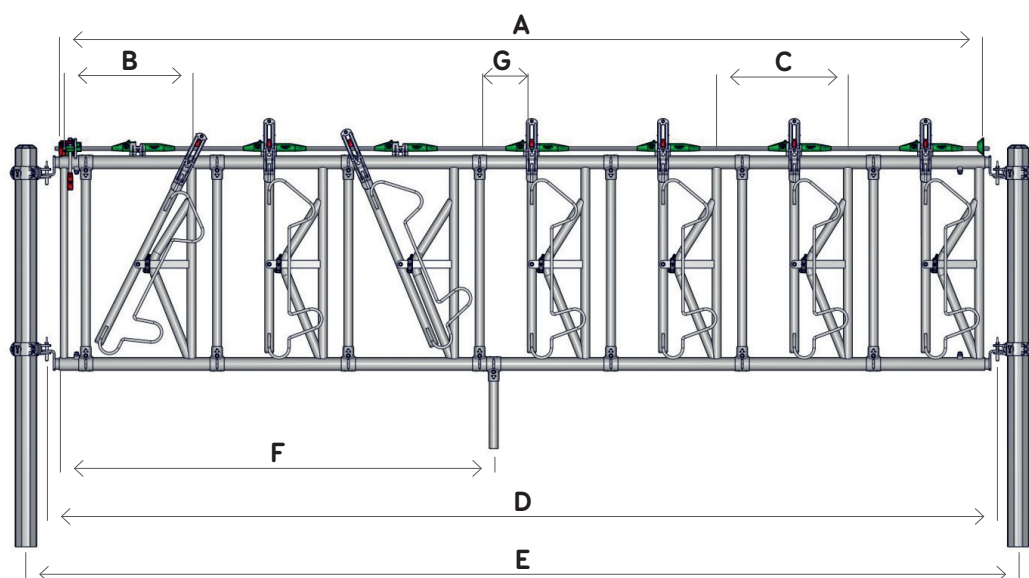
always
INNOVATING

Fixed SAFETY® IV
(assembly on Ø 102 mm
OCTAGONAL post, bracket
and standard ends
ref. MO5050)



Ref.	Name (space/m)	A	B	C	D (min)	E (min)	D (max)	E (max)	F	G
SQ1750	7 s./5 m	4,700	660	664	4,788	4,984	4,950	5,146	2,110	200
SQ1850	8 s./5 m	4,700	577	581	4,788	4,984	4,950	5,146	2,500	195
SQ1860	8 s./6 m	4,700	708	705	5,788	5,984	5,950	6,146	3,120	200

Adjustable export SAFETY® IV
(assembly on Ø 102 mm
OCTAGONAL post, bracket
and welded straight ends
ref. MO5054)



Ref.	Name (space/m)	A	B	C	D (min)	E (min)	D (max)	E (max)	F	G
SQ0426	4 s./2.60 m	2,290	480	562	2,350	2,546	2,607	2,803	-	215
SQ0532	5 s./3.20 m	2,920	480	581	2,980	3,176	3,237	3,433	-	235
SQ0538	5 s./3.80 m	3,520	493	728	3,580	3,776	3,837	4,033	-	275
SQ0632	6 s./3.20 m	2,920	404	477	2,980	3,176	3,237	3,433	-	180
SQ0638	6 s./3.80 m	3,500	479	581	3,560	3,756	3,817	4,013	-	235
SQ0738	7 s./3.80 m	3,500	405	495	3,560	3,756	3,817	4,013	-	195

Adjustable export SAFETY® IV (assembly on Ø 102 mm OCTAGONAL post, bracket and standard ends ref. MO5050)

Ref.	Name (space/m)	A	B	C	D (min)	E (min)	D (max)	E (max)	F	G
SQ0746	7 s./4.60 m	4,300	579	610	4,388	4,584	4,550	4,746	2,018	265
SQ0748	7 s./4.80 m	4,500	664	628	4,588	4,784	4,750	4,946	2,150	280
SQ0846	8 s./4.60 m	4,300	510	510	4,388	4,584	4,550	4,746	1,780	210

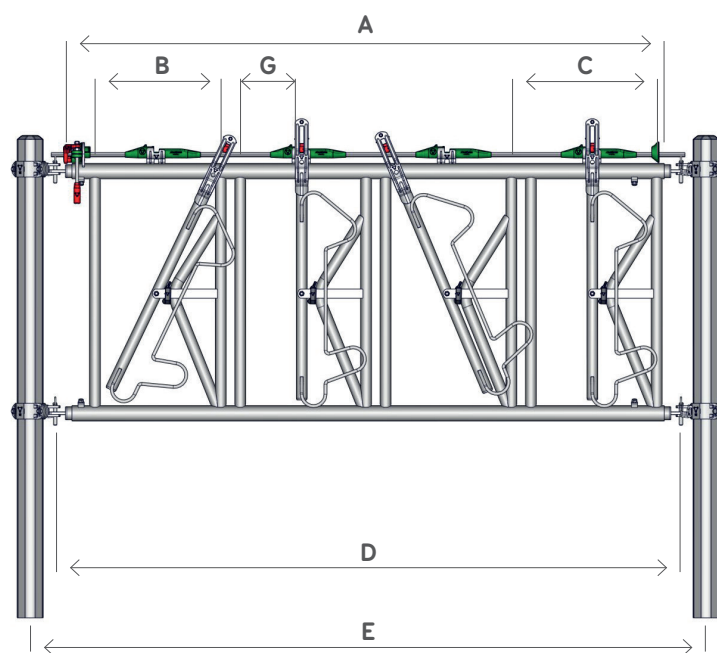


JOURDAIN
N°1 MONDIAL DU TUBULAIRE BOVIN



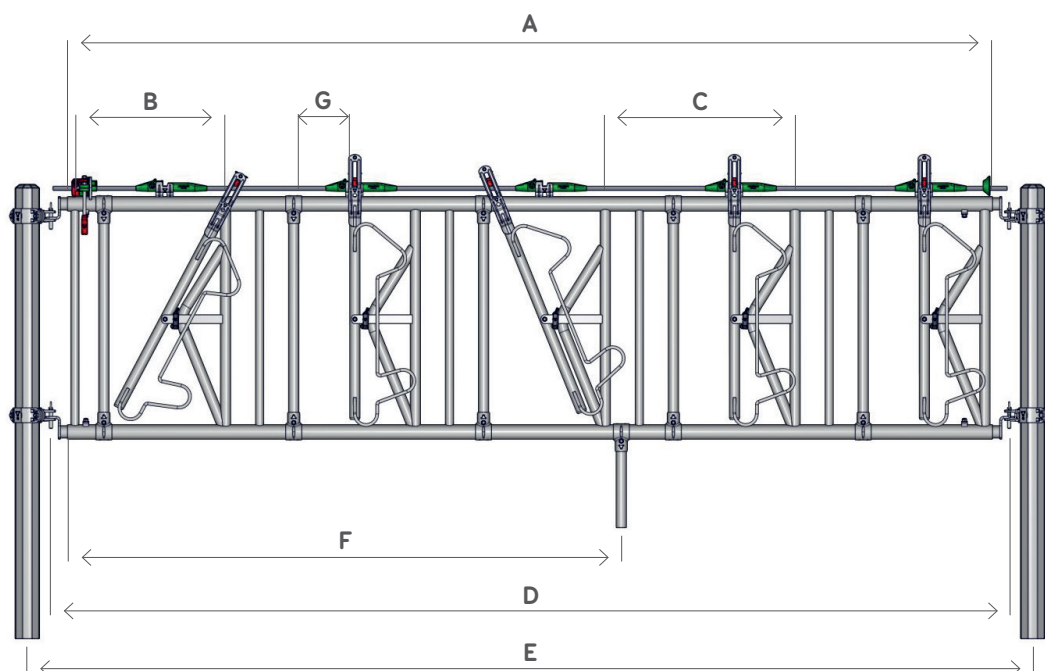
always
INNOVATING

Fixed export SAFETY® IV
(assembly on Ø 102 mm
OCTAGONAL post, bracket
and welded straight ends
ref. MO5054)



Ref.	Name (space/m)	A	B	C	D (min)	E (min)	D (max)	E (max)	F	G
SQ1426	4 s./2.60 m	2,290	482	562	2,350	2,546	2,607	2,803	-	195
SQ1532	5 s./3.20 m	2,920	486	581	2,980	3,176	3,237	3,433	-	195
SQ1638	6 s./3.80 m	3,500	486	581	3,560	3,756	3,817	4,013	-	195

Adjustable SAFETY® IV BIO
(assembly on Ø 102 mm
OCTAGONAL post, bracket
and standard ends
ref. MO5050)



Ref.	Name (space/m)	A	B	C	D (min)	E (min)	D (max)	E (max)	F	G
SQ0541	5 s./4.10 m	3,800	619	780	3,888	4,084	4,045	4,241	2,275	295
SQ0648	6 s./4.88 m	4,580	619	780	4,668	4,864	4,825	5,021	2,275	295
SQ0756	7 s./5.66 m	5,360	619	780	5,448	5,644	5,605	5,801	3,060	295



The "Made in France" logo is a label that manufacturers or distributors may attach to their products under certain conditions in order to attest to their French origin:

- if a significant part of its value is derived from one or several production phases located in France,
- or if it has undergone its final substantial processing in France (source: www.economie.gouv.fr).

For JOURDAIN, this definition of "Made in France" is not enough, which is why we have created our own logo, certifying a much stronger commitment:

- the French manufacture of our products guarantees total control of design, manufacture, quality control and logistics in house, on our Escrennes site (in the central French department of Loiret).

AGENCEZEBRA.COM - Update: 09/2023



Find all
our products



WWW.JOURDAIN-GROUP.COM

always
INNOVATING

SAFETY® IV HEADLOCK (ref. SQ) | TCU

17/17